



**Client: University of the Witwatersrand**  
**Services: Implementation Plan, Methodology and Costing**  
**Appointed Date: May 2020**

# Wits Knockando Hall of Residence, South Africa

## Geotechnical Investigation

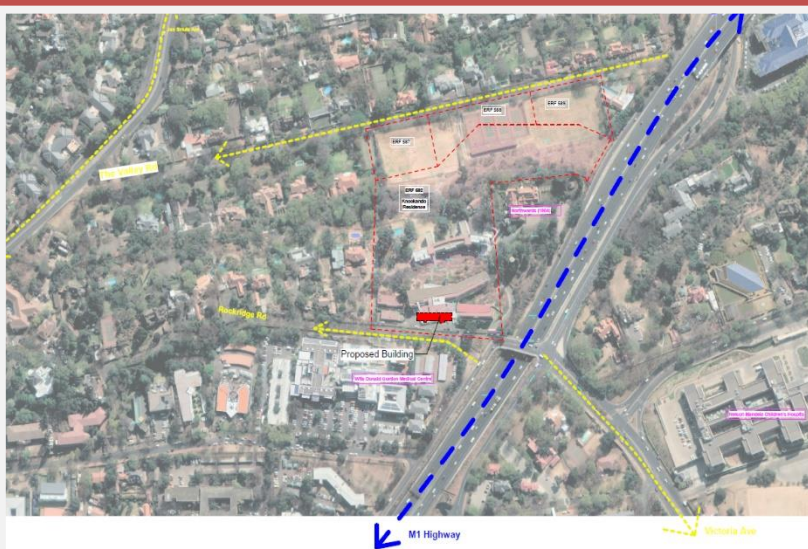
### The Task

The University of the Witwatersrand appointed Nurizon Consulting (Pty) Ltd. To undertake a geotechnical investigation at Knockando Hall of Residence.

### Design Services

Nurizon's scope of services included the following:

- Deep investigation – percussion boreholes
- Analysis and Reporting



### Geotechnical Campaign

The geotechnical investigation scope of work consisted of the following:

- Mobilization and demobilization of machinery and equipment on site.
- Setting out the test pits & testing
- Site work
- Laboratory testing of samples
- Analysis & Technical reporting

Nurizon South Africa  
T: +27 (0)12 345 3649  
E: info@nurizon.co.za  
W: www.nurizonconsulting.com

Nurizon United Kingdom  
T: +44 (0)1483 366 033  
E: info@nurizon.co.uk