

Client: Practara / Nuco Chrome  
Services: Mine Infrastructure Design, Stormwater and Tailings  
Project Date: 2020

# NUCO CHROME – KOOKFONTEIN MINE

SWMP and TSF Design

## The Task

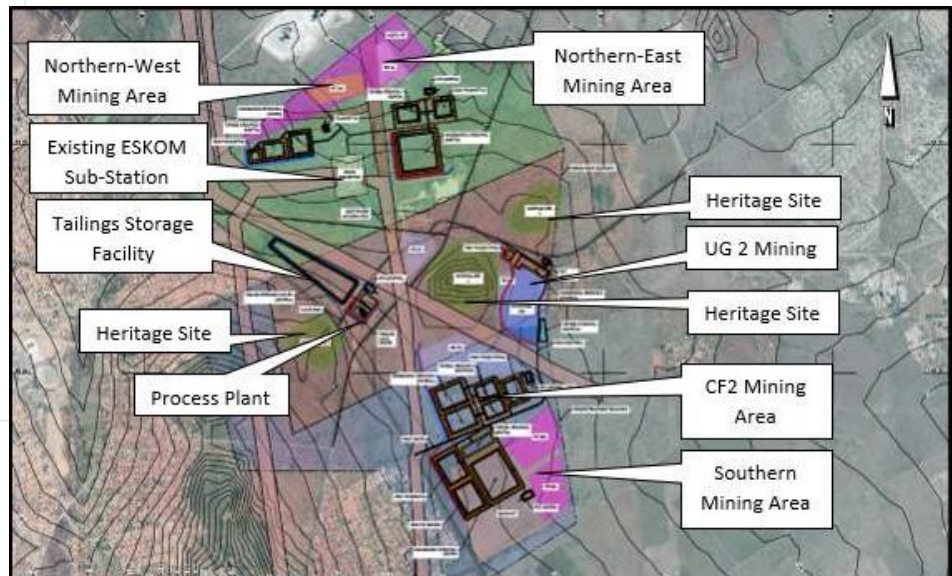
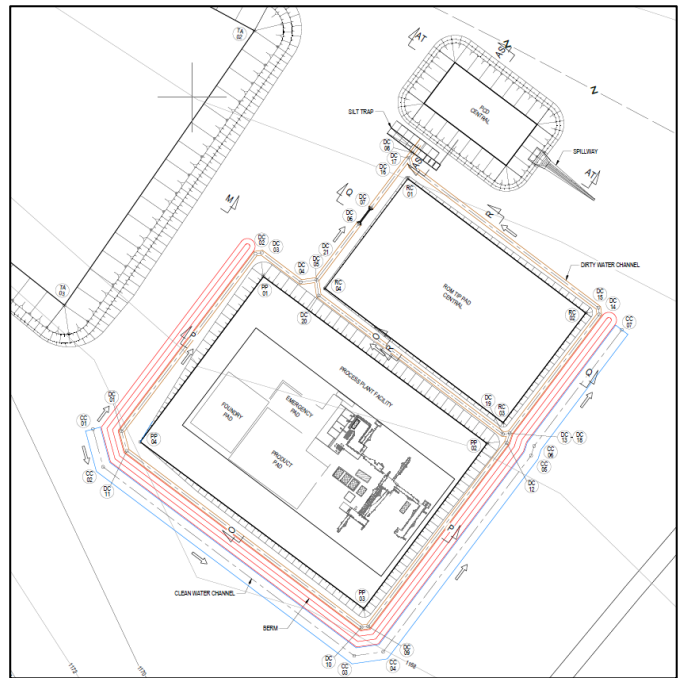
Practara appointed Nurizon Consulting Engineers to develop a Stormwater Management Plan for Nuco Chrome’s Kookfontein Mine (334ha Mining Right Boundary).

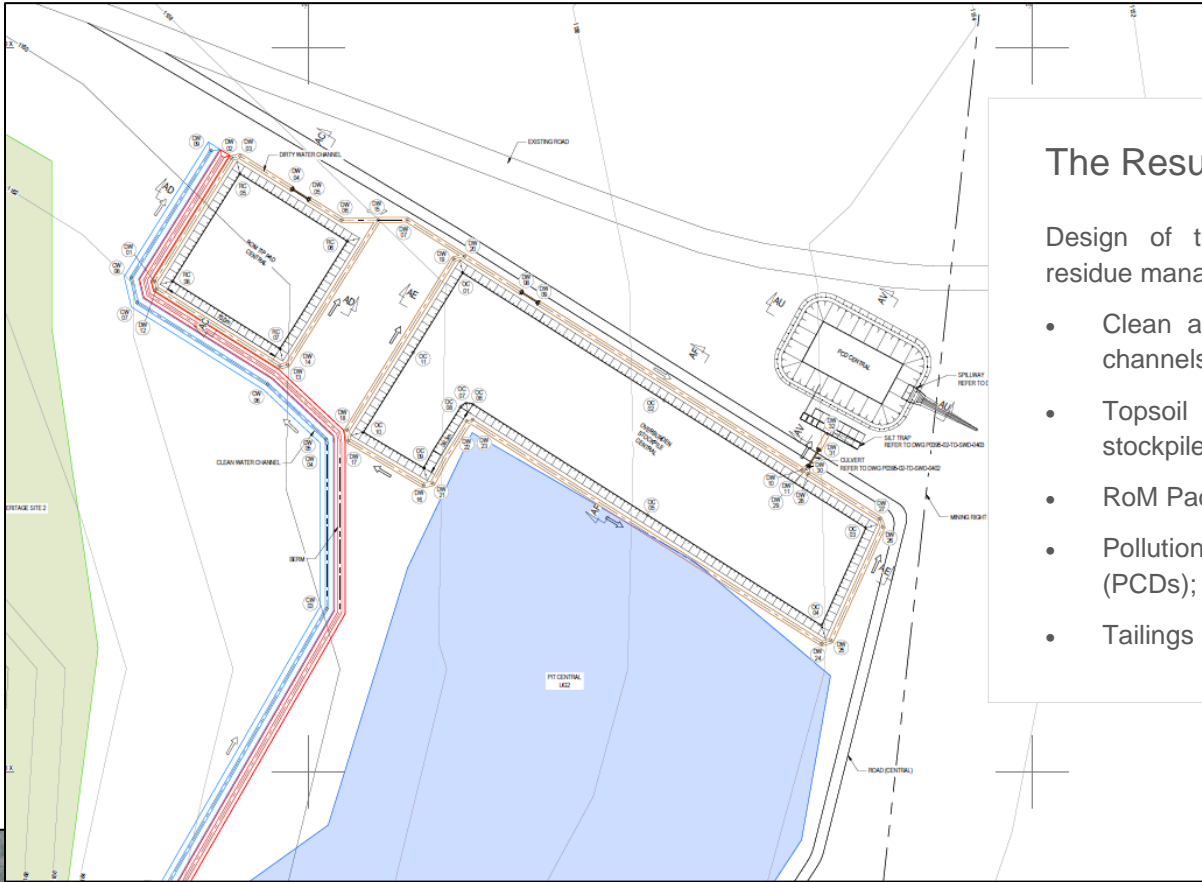
Kookfontein Mine is situated in Rustenburg, North-West Province of South Africa and is approximately 10.7km north-west of Rustenburg, 2.9km east of Phokeng and 10.2km west of Kanana

## Design Services

The design portion consists mainly of the following (in summary):

- Geotechnical investigation;
- Stormwater Management Plan (SWMP) and Stormwater Engineering Design;
- Tailings Storage Facility (TSF) design;
- Overburden stockpile design; and
- ROM stockpile and ROM Tip Design.

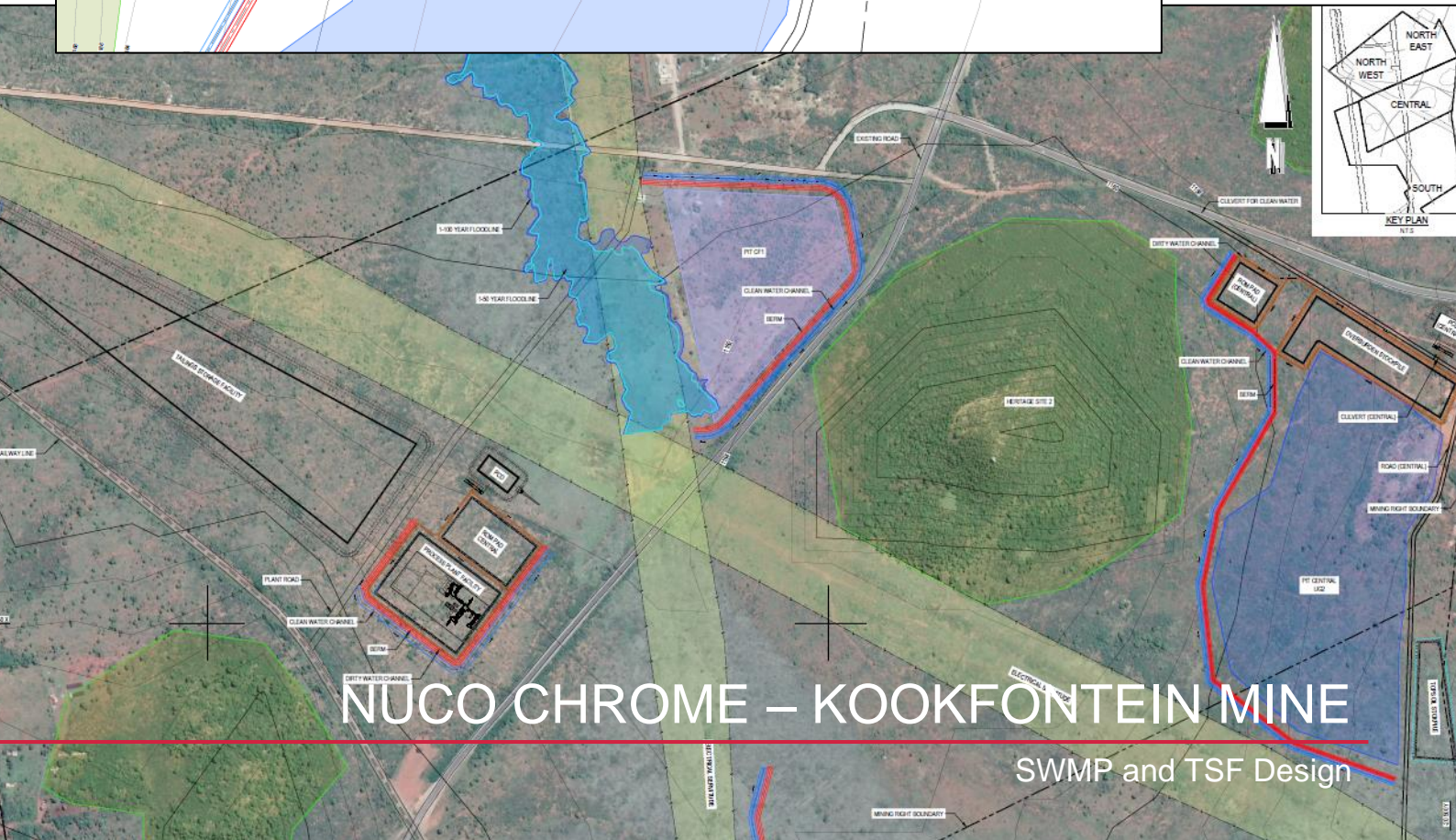




## The Result

Design of the Mine's waste / residue management, in terms of:

- Clean and Dirty stormwater channels;
- Topsoil and Overburden stockpiles;
- RoM Pads;
- Pollution Control Dams (PCDs); and
- Tailings Storage Facility.



# NUCO CHROME – KOOKFONTEIN MINE

SWMP and TSF Design