

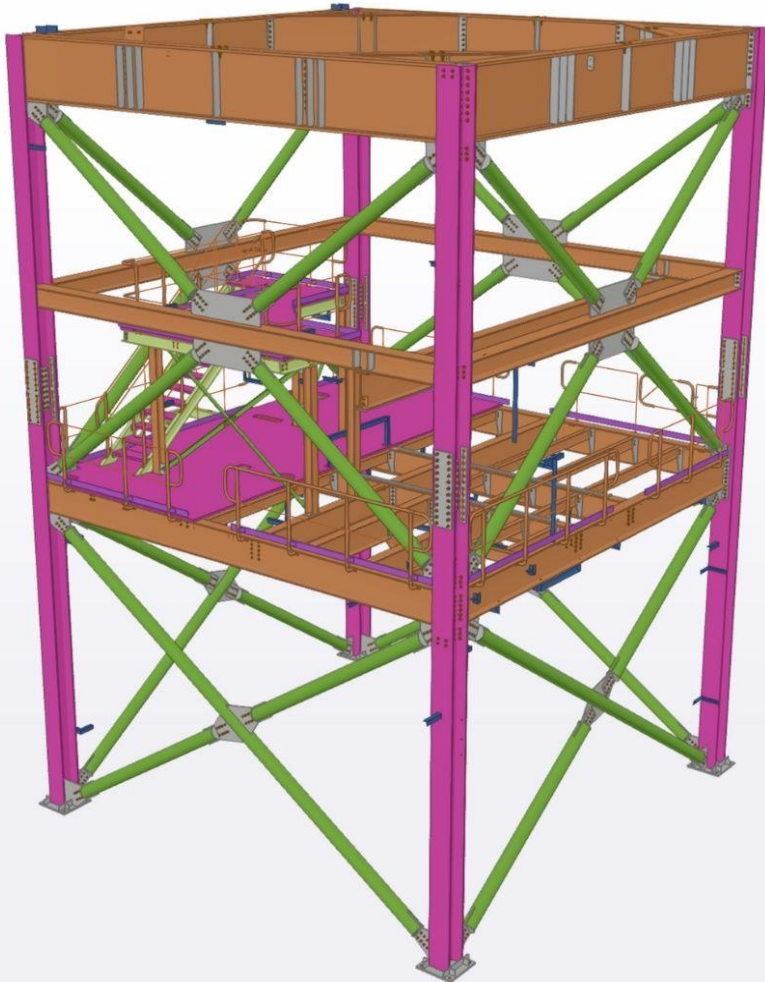
Client: Jordproxa / PPTech  
Services: Detail Design, Structural Design, Construction Support

# Terrafame, Finland

Mega Plant Project: Structural Design, Detail Design, Construction Support

## The Task

JordProxa / PPTech appointed Nurizon Consulting to undertake the structural design of a New Metals Converting Plant (NiSu) at Terrafame OY's existing Sotkamo, Finland site. The NiSu consists of 3 processing plants, Cobalt sulphate (CoS), Nickle sulphate (NiS) and Ammonium sulphate (AmS). Nurizon also assisted with the quality assurance of the structures being fabricated in China, transported via ship and finally erected in Finland.





Client: JordProxa / PPTech  
Services: Detail Structural Design, Fabrication Drawings and Construction Support

# Terrafame, Finland

Mega Plant Project: Structural Design, Detail Design, Construction Support

## Scope of Services

### Structural Design:

- General and Project Coordination
- Structural design according to the Eurocode (structures manufactured in China and erected in Finland).
- Material Specification (extreme temperatures)
- Area 1631 Cobalt Sulphate Crystallization
- Area 1632 Nickel Sulphate Crystallization
- Area 1633 Ammonium Sulphate Crystallization

### Fabrication Drawings:

- Area 1631 Cobalt Sulphate Crystallization
- Area 1632 Nickel Sulphate Crystallization
- Area 1633 Ammonium Sulphate Crystallization

### Fabrication and Construction Quality Assurance

