

Client: East Rand Water Care Company (ERWAT)
Value: R19 million
Services: Dolomitic Stability Investigations
Project Duration: 2017 – 2019

19 ERWAT Waste Water Treatment Plants

Dolomitic Stability Investigations

The Task

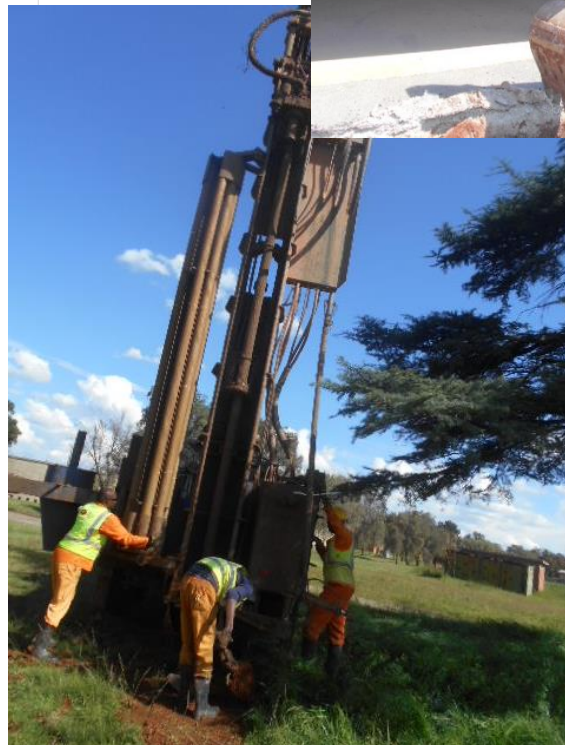
East Rand Water Care Works (ERWAT) appointed Nurizon Consulting (Pty) Ltd. to undertake dolomitic stability and geotechnical investigations for their 19 (nineteen) Waste Water Care Works sites (WWCWs), located in the region of the Ekurhuleni Metropolitan Council (Eastern Gauteng).

Design Services

Dolomitic stability and geotechnical investigations for the 19 WWCWs, over a period of 2 years.

The investigations consisted of the following elements:

- Gravity surveys;
- Existing services detection;
- Percussion boreholes, drilled to depths of 60m;
- Borehole profiling;
- Test pit profiling and sampling;
- Dynamic Cone Penetrometer (DCP) testing;
- Laboratory testing;
- Analysis; and
- Dolomitic Stability Evaluation of the respective sites.



The Result

Dolomitic stability evaluation reports were prepared for the respective sites, providing information in terms of:

- Dolomite Area designations;
- Inherent Hazard Class designation; and
- Development Criteria.

The dolomitic stability evaluation reports were submitted and approved by the Council of Geoscience, for the development on these dolomitic sites.



19 ERWAT Waste Water Treatment Plants

Dolomitic Stability Investigations