

Client: Lte Consulting (Department of Water and Sanitation & Lepelle Northern Water)

Value: R600 million

Services: Bulk water design; tender and construction documentation

Project Duration: 2014 – Ongoing

# Nandoni Bulk Water Supply Project – Giyani, Limpopo

Bulk Water Supply: Detail Design

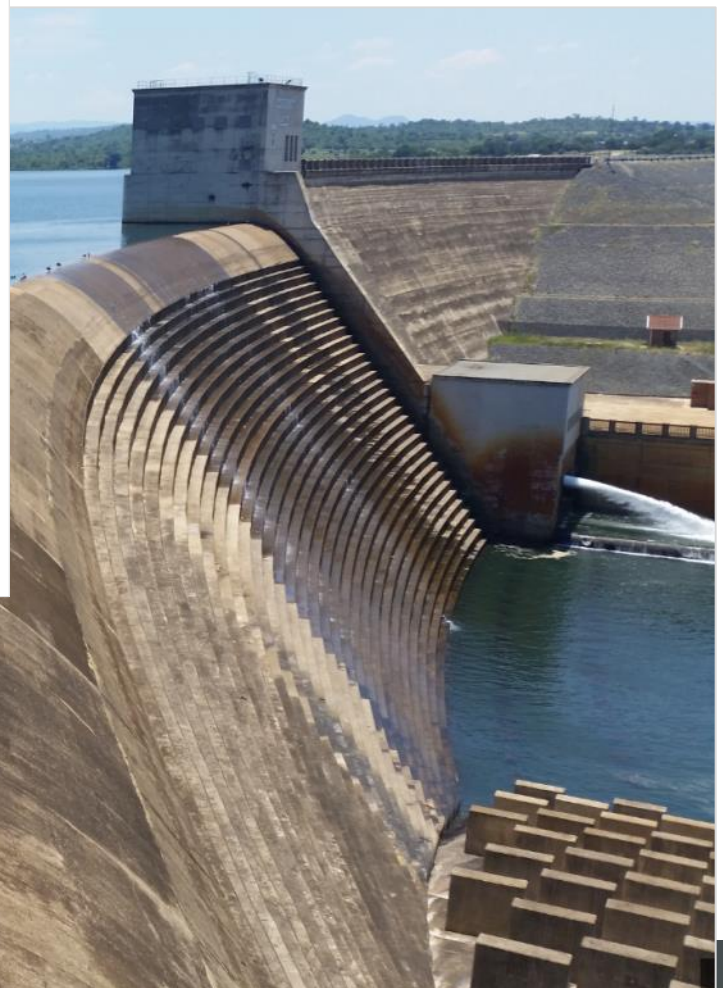
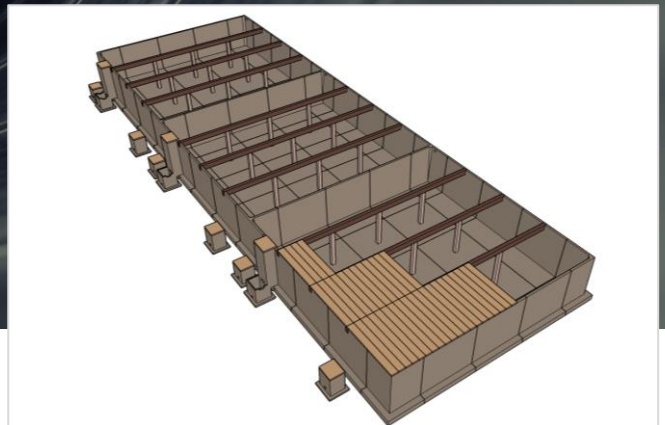
## The Task

The water supply from Nsami Dam near Giyani, Limpopo Province is under severe pressure to accommodate ever increasing water demands in the area. In an effort to meet future water demands, water is to be pumped from the Nandoni Dam (near Thohoyandou, Limpopo Province) to supplement the Giyani current water supply scheme.

Water is extracted from the Nandoni Dam and treated at the existing water treatment works (WTW) at Nandoni, after which the treated water is pumped from the Nandoni WTW to a new concrete reservoir near Giyani; as well as supplementing the bulk water supply to the greater Malamulele Area (Limpopo Province), which provides water to approximately 84 villages.

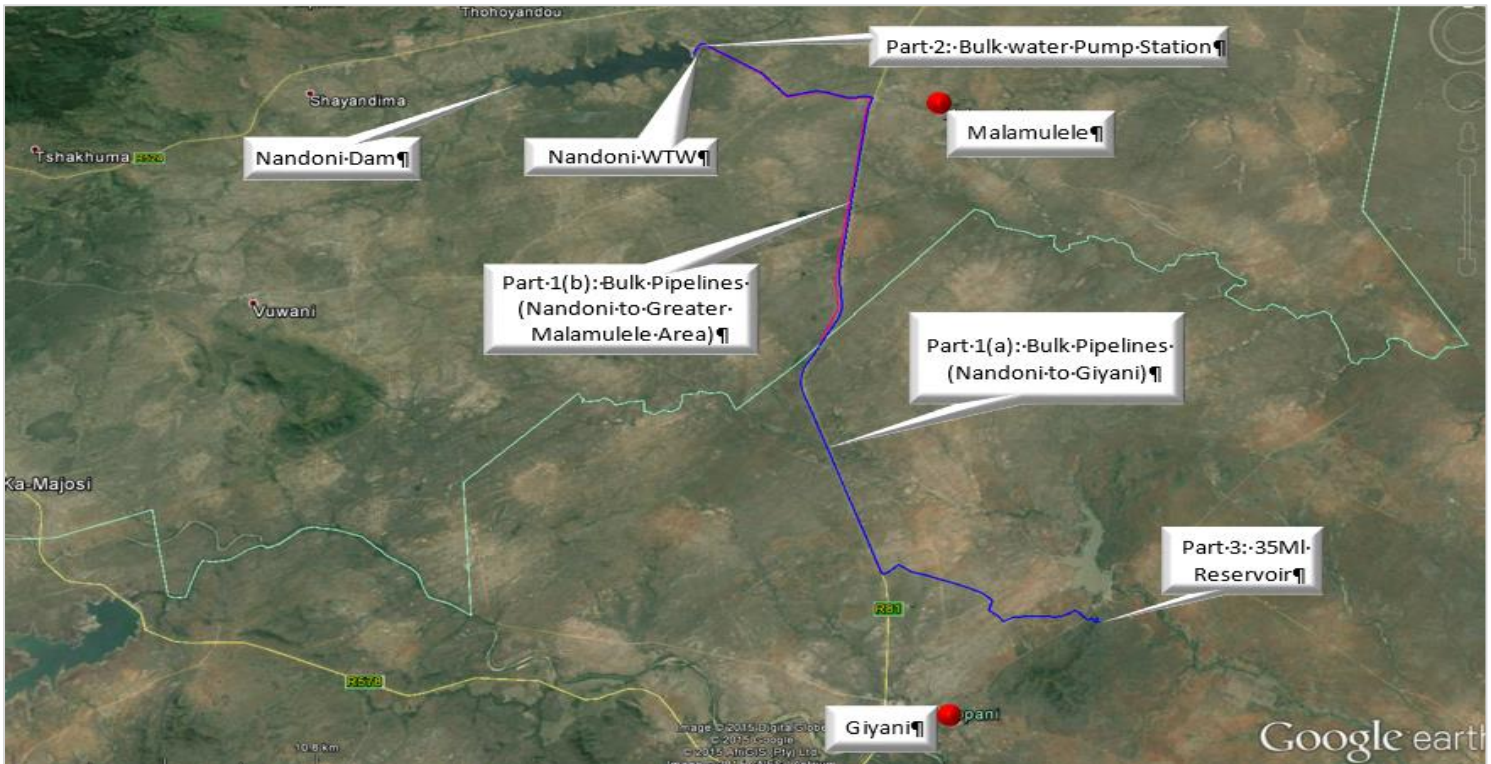
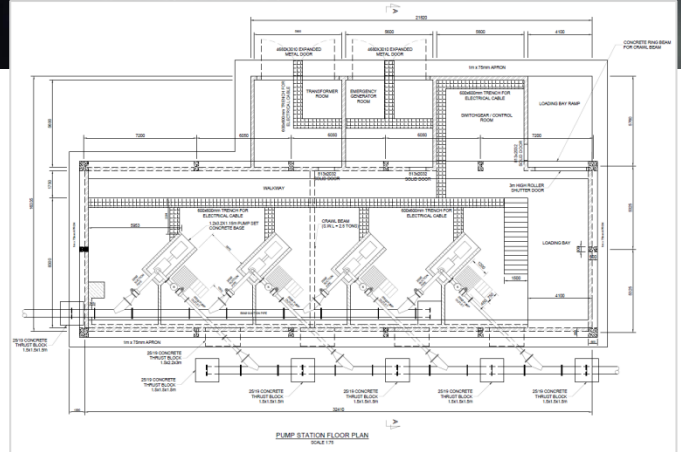
## Design Services

Nurizon was responsible for the detailed design of the bulk pipelines, ranging from 200 to 800mm diameter and with a total length of approximately 200km. The bulk water pump station at the Nandoni WTW and a 35Ml concrete reservoir in Giyani also formed part of the project design works.



## The Result

The solution ensured that the communities in the Greater Giyani Local Municipality area will have a robust potable water system which will be sufficient to accommodate demand up to 2040.



# Nandoni Bulk Water Supply Project – Giyani, Limpopo

Bulk Water Supply: Detail Design